

FreezeMan

Freeze Utility Management for the Newton OS

Table of Contents

1	Welcome and Registration	1
1.1	About FreezeMan	1
1.2	Register FreezeMan	1
1.3	Contacting Stand Alone Inc.	2
1.3.1	Email	2
1.3.2	Phone	2
1.3.3	Regular Mail	2
1.3.4	World Wide Web	2
2	Installation	3
3	Using Freeze Man	4
3.1	Launching FreezeMan	4
3.2	Freezing and Thawing	4
3.3	Grouped Icons	5
3.3.1	Making Your Custom Sets	6
3.3.2	Switching Between Sets	6
3.3.3	Set Information and Naming Sets	6
3.4	Deleting Sets	7
3.5	The i Button	7
3.5.1	About, Register, and Enter Password	7
3.5.2	Prefs	7

1 Welcome and Registration

1.1 About FreezeMan

Welcome to FreezeMan for the Newton OS. Just like our freeze utilities program, this program is designed to save heap space on your Newton by freezing any applications that aren't in use. Freeze Utilities stops there, while FreezeMan contains several functions to make freezing faster and more convenient. It allows you to freeze or thaw many icons at once, and it groups icons, so that if one is frozen or thawed, they all are. This is especially useful for large application with multiple parts that all need to be active to be used.

Included in this archive are the following packages:

FreezeMan.pkg

This is the software package that you need to install on your Newton

FreezeMan.pdf

This is the users' manual for FreezeMan. You are reading it right now.

SASuff.txt

A list of all of the software available from Stand Alone Inc.

SA reg.pkg

Install this package to register your software.

1.2 Registering FreezeMan

The FreezeMan Demo will work for a 30 day trial period. At the end of the 30 Days, it will stop working. To avert this tragedy, you will need to get in touch with Stand Alone to register your software. You can register with us by several different methods.

You will need to include the following information, no matter how you choose to register. Most importantly, you need to include your name EXACTLY as it is entered in your Newton, including spaces. We use this to generate your password, so it must be precise. You will need to specify which programs you wish to register, and include payment for each of them. We accept Visa, Mastercard, and American Express. If you are using normal mail, you can send us a check as well. Make sure to include your card number, the expiration date, and what type of card

you are using. You also need to give us a way to get in touch with you. Email is the preferred way, followed by your address and phone number. An Email address is not strictly necessary, but it will result in much faster service.

For instant gratification, register by phone, and pay using Visa or Mastercard. To do so, call (773) 477-2492 and we will give you a password right over the phone.

Alternatively, you can send us a check for \$19.95 to the address below.

You can also Email us one of several ways. The application has a Register section under the **i** button. Tap on that to open up a registration slip. If you fill out that slip, and have an Email client on your Newton, it will automatically Email us and we will send you a registration code. You can still just Email us the relevant information from your Newton or a desktop machine, and we'll send you a code. If you are registering through Compuserve, use, GO SWREG.

Once you register, you will receive a password from us. You can install this password one of two ways. If there is an option to Enter Password under the **i** menu, tap on it to bring up a screen that has a space to enter the password. If you don't have this option, just install the SA Register package enclosed in the FreezeMan archive. Select "FreezeMan" from the pop-up menu at the top, and enter the password. You should get a message confirming the password. You may then remove the SAS Register application from you Newton.

1.3 Contacting Stand Alone Inc.

There are several ways to get in touch with us here at Stand Alone Inc. Email is the preferred form of communication, but whatever works for you is fine. If you have any questions, comments, suggestions or compliments, please don't hesitate to contact us through any of the methods listed below.

1.3.1 Email:
internet: info@standalone.com
AOL: Std Alone
CompuServe: 76342,3057

1.3.2 Phone:
Voice: (773) 477-2492
Fax: (773) 477-2579

1.3.3 Regular Mail:
Stand Alone
3171 N. Hudson, Suite 1
Chicago, IL, 60657, USA

- 1.3.4 World Wide Web:
<http://www.standalone.com>

2 Installation

The first thing that you need to do to get your software up and running is to install it on your Newton. To do this, you need to have Newton Backup Utility or Newton Connection Utilities set up to talk to your Newton. If you have problems with this part of the installation, please consult the documentation that came with your Newton. Once either Utility is set up, just follow the steps listed below to for each of the packages you wish to install.

1. Open the Newton Backup Utility , or Newton Connection Utilities



on your Desktop machine.

2. On your Newton, go to the Extras Drawer  and tap the Connection icon



3. Once the Newton Backup Utility has loaded on your desktop machine, make sure your cables are connected and tap the **Connect** button on your Newton.

4. For each of the packages you wish to install, do the following:

- Tap the Install Package button in the Newton Backup

Utility



- Go to the folder where your packages are, and select the desired package.

- Click on the “Install” button

3 Using FreezeMan

3.1 Launching FreezeMan

To use FreezeMan, you have to launch the program. To do this, go to your Extra's

drawer and find the FreezeMan icon . Tap it, and the application will

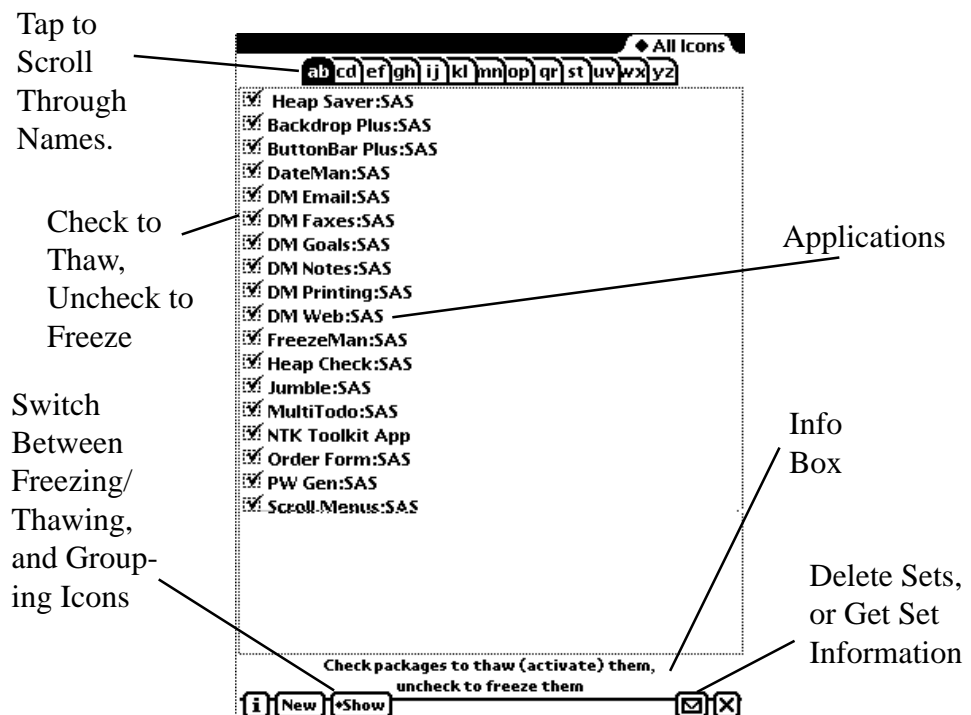
activate. When it launches, a screen will appear with a list of all of the packages on your Newton. This is the basic FreezeMan screen, and it is from here that you control the freezing or thawing of your applications. To choose which of FreezeMan's functions you wish to use, tap on the Show picker. It will give you a choice between Freezing and Thawing, and Grouped icons.

3.2 Freezing and Thawing

The first main function of FreezeMan is to freeze or thaw many different items at once, rather than having to do each one individually. To use this ability, go to the Show picker and select Freeze & Thaw.



The screen will now appear like the one below.

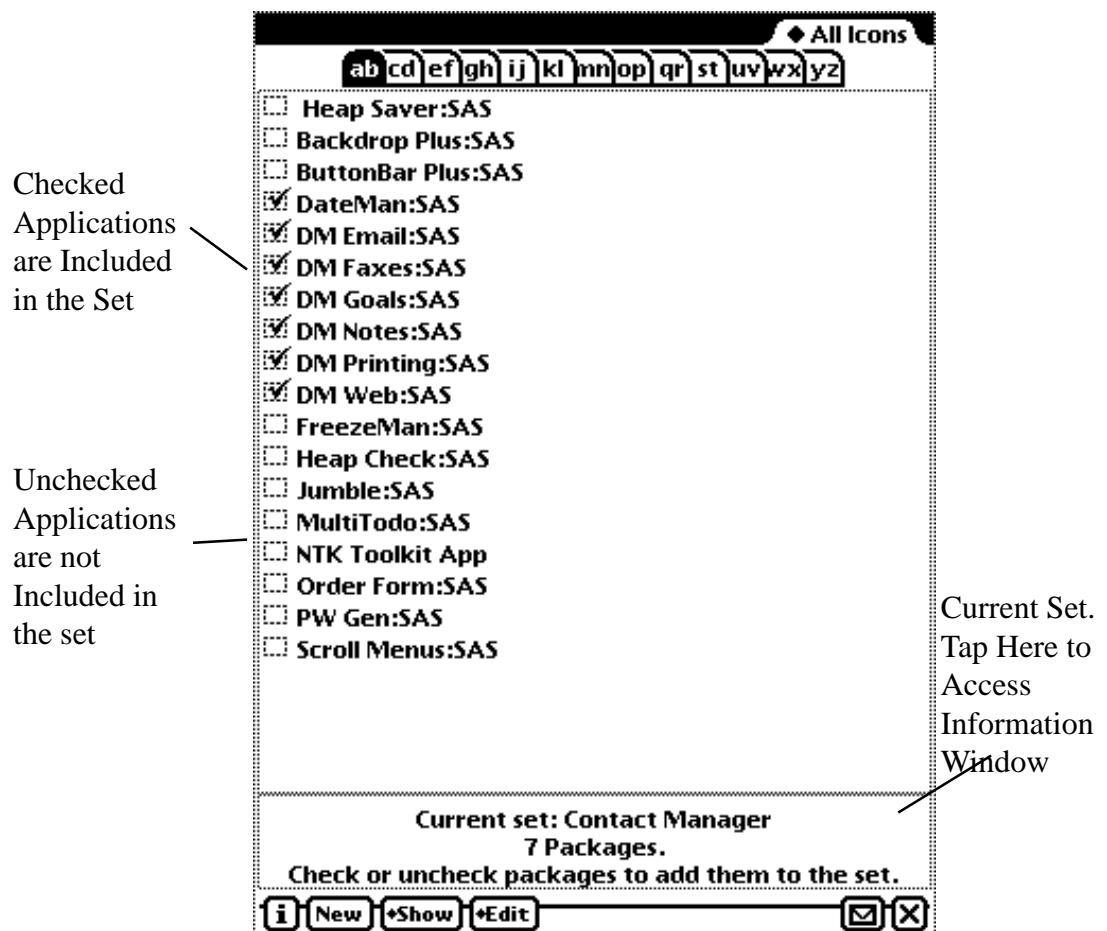


The screen has a list of all of the applications on your Newton. If an application name is checked, and in bold type, it is unfrozen. If it is in light type, and the box is unchecked, than it is frozen. All you need to do to change the status of an application is to check, or uncheck, the box next to it. The applications are automatically frozen or thawed when you exit the FreezeMan application.

You can also freeze or thaw icons straight from the Extras drawer. To do this, just select the icon, and tap the action button . It gives you the choice of freezing or thawing the selected icons.

3.3 Grouped Icons

The Grouped Icons choice under the Show menu is where you can design your own sets of icons.



By grouping programs, such as all the parts of a multiple package application, or a

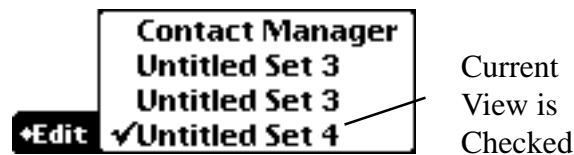
group of applications that you always use together, you freeze or thaw all of them with just one tap. Once the icons are grouped in set, and are frozen or thawed together. If you freeze or thaw one of them, than they are all affected.

3.3.1 Making your custom sets

The window at the bottom of the screen tells you what set you are working on. If you wish to add a package to the set, just check it. All the programs that are checked are included in the set. To create a new set from scratch, just tap the New button.

3.3.2 Switching between sets

If you tap on the Edit picker, a list will appear with all of FreezeMan's available sets. Tap on the set you wish to view, and it will appear.

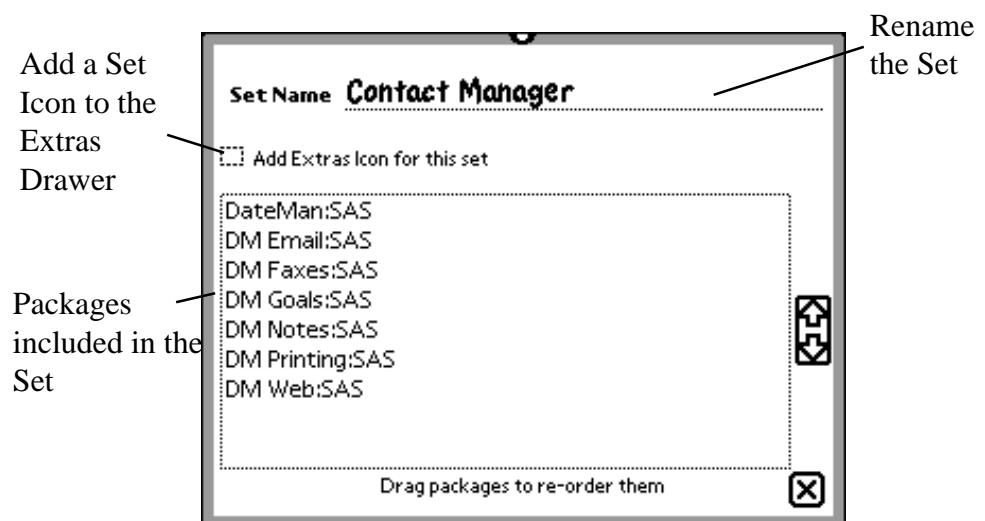


3.3.3 Set information and naming sets

To receive more information on a set, or to name it, you have two choices. You can either tap on the small window under the screen when FreezeMan has the Grouped Apps option selected, or you can open up the Action button and select Set Info. Doing either of these will bring up a screen with more information. If you wish to rename a set, just replace its name with one of your own. You can also create an icon for the entire set. This icon will appear in the Extra's drawer, and will be labeled with the set name.



If you do include one of these icons, you can freeze or thaw the entire set by tapping on the new Icon.



3.4 Deleting Sets

If you wish to delete a set from FreezeMan, just tap the Action button, and choose Delete Set. This will permanently delete the selected set, so make sure that it is really what you want to do.



3.5 The **i** button

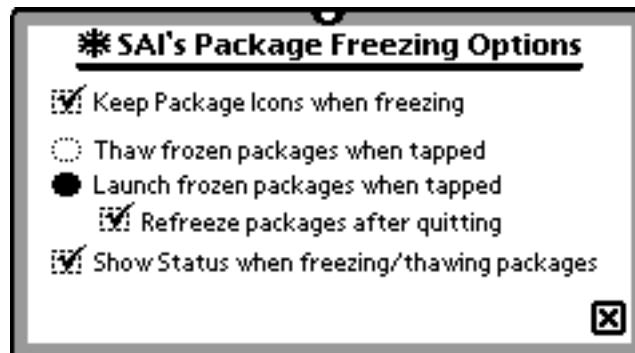
The **i** button contains a number of way to gain more information about FreezeMan, getting in touch with Stand Alone Inc., and customizing the program to your needs.

3.5.1 About, Register, and Enter Password

The i menu contains a number of different choices that are important to FreezeMan. About tells you a bit about the program, and gives you ways to contact us. Register, and enter Password are used if you need to register FreezeMan. More complete instructions on registration are found in the chapter 1.

3.5.2 Prefs

The Prefs section of FreezeMan is where you can customize the application however you want it.



Keep Package Icons when freezing

If this is checked, a frozen package will retain its original icon, with a snowflake added to it. If it is unchecked, than only the package name will appear, and the icon will be changed into a large snowflake.

Thawing icons

When an icon is tapped, you have two choices. You may either have the application thaw, or you may choose to have it thaw and launch. If you choose to have the icon launch, you may also decide whether or not the package will be refrozen when you quit using it. To automatically refreeze the icon, just tap the box next to that option. Lastly, you can choose to have your Newton show you the status of freezing or thawing a package. This shows you a bar showing how close to completing the freezing or thawing FreezeMan is. This is more useful on the older Newtons, where Freezing or thawing large packages can take a bit of time. If you don't care about the status of a freezing or thawing procedure, just uncheck the box.