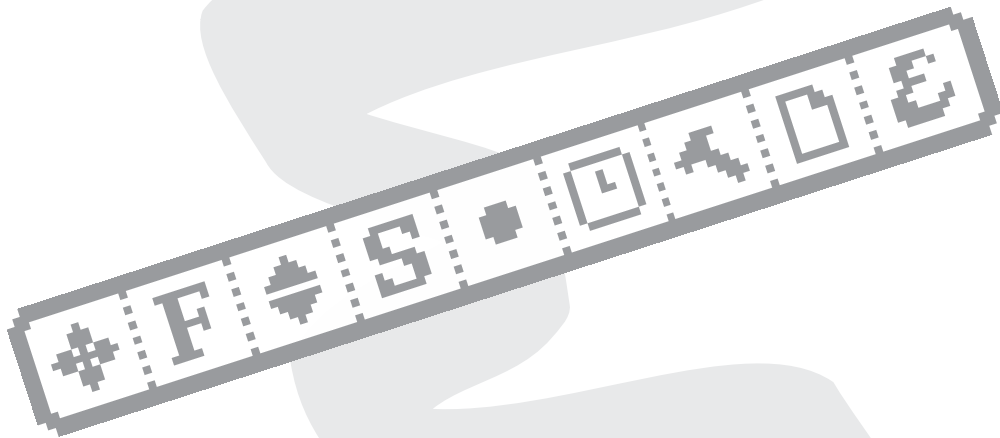




EleganceTM

Newton Power ToolTM



Lightbulb Factory

ELEGANCE MANUAL

MANUAL CONTENTS

WHAT IS ELEGANCE?	2
ABOUT THIS USERS GUIDE	2
ELEGANCE TOOLBAR	3
ARROWS ICON	3
FONT LIST MENU	4
FONT SIZE MENU	4
FONT STYLES MENU	5
PEN SIZES MENU	5
SLEEP TIME MENU	6
TOOLS MENU	6
APPLICATIONS MENU	7
ELEGANCE™ MENU	8
ELEGANCECUSTOMIZER	9
SOUPSTOCKS	12
TOOLS MENU	12
SOUPSTOCKS	13
INSTALLING ELEGANCE	15
TECHNICAL SUPPORT	16
APPENDIX A CALCULATEIT! FUNCTIONS	18
LEGAL STUFF	20

Elegance™ By Nicolas Cianca
Version 1.2.4
Manual Revision 1.2

Copyright © 1993-1995 Lightbulb Factory, Inc. All Rights Reserved.
Elegance™, EleganceLite™ and its Logos are Registered Trademarks of Lightbulb Factory, Inc.

WHAT IS ELEGANCE?

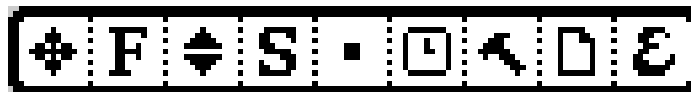
Elegance is a floating, customizable toolbar that gives you easy access to many of the features available on the Newton. It allows you to control the appearance of text and offers a number of shortcuts to commonly used Newton functions.

Elegance has three general purposes;

To provide instant access to a set of features that deal with the look of the text.

To custom built instantly accessible menus to many of the Newton's own tools (bypassing the time consuming steps normally required to use them), and

To gain instant access to other applications you use frequently.



ABOUT THIS USERS GUIDE

This users guide is broken up into several chapters. These chapters describe Elegance, explain how to use and customize it and how to install it on your Newton.

Elegance Toolbar	Provides a comprehensive look at each of the Elegance menus and explains how to use them.
Elegance Customizer	Guides you through the process of customizing Elegance on your Newton.
SoupStocks	Describes the different tools that ship with Elegance.
Installing Elegance	Guides you in installing Elegance on your Newton and getting the most out of your memory.
Ordering & Registration	Explains how to register your copy of Elegance.
Support	Explains how to contact us for assistance and support.

ELEGANCE TOOLBAR

When the Elegance software is installed on your Newton, a small movable palette known as the toolbar appears on the screen.



- When tapped, each icon on the toolbar displays a menu.
- These menus add several features, such as new fonts, font sizes and character styles, and allow them to be easily mixed within a block of text.
- The Elegance toolbar can easily be moved to any location on the screen you find convenient at the time and will be available in all applications.
- The size of the pen thickness used for drawing or writing can be adjusted, and the sleep time can easily be changed.
- Access to many extra tools as well as built-in tools is provided directly from the toolbar.



ARROWS ICON

This is the only icon on the Elegance toolbar that does not display a menu. Instead, it allows you to either move the toolbar around the screen to the location that is most convenient or it allows you to shrink and expand the toolbar.



To move the toolbar, simply tap the Arrows icon and continue to apply pressure. Use the pen to “drag” the toolbar across the screen to the desired location.

Double tapping the Arrows icon will either Shrink or Expand the Elegance toolbar.



FONT LIST MENU

Tapping the second icon from the left displays the font menu. This menu allows you to switch between any of the font's, or typefaces, currently installed in your Newton.



You may change the font of any block of text (down to a single letter) by simply selecting that block, opening the Font menu and choosing a different font. The different font's may be mixed within a selection of text.



The three fonts are built into the Newton are Geneva, New York and Espy. These font's are known as Simple and Fancy, respectively, and the third font, is a hidden font for the Newton's internal use and is not generally available without Elegance.

Selected not selected



Opening the Font menu without first selecting a block of text displays the default Font Menu, allowing you to set the font of all future text entered. This menu also shows an additional font, Monaco.



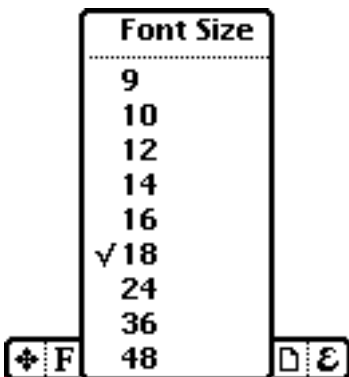
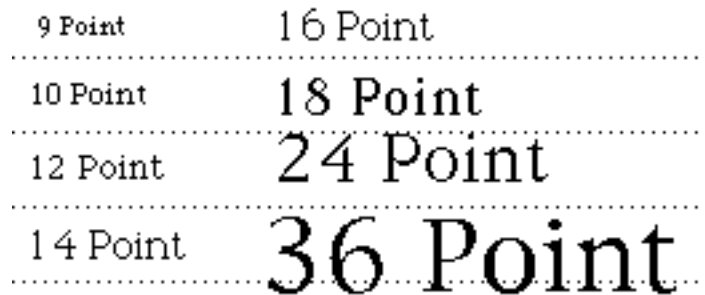
FONT SIZE MENU



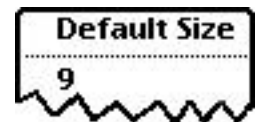
The third icon displays the Font Size Menu, which controls the size of the Characters in the text.

Elegance adds five new font sizes, ranging from 9 point (small) to 48 point (large). Elegance add's 14, 16, 24, 36, and 48 points to the Newton's own 9, 10, 12 and 18 Font sizes may be mixed within a block

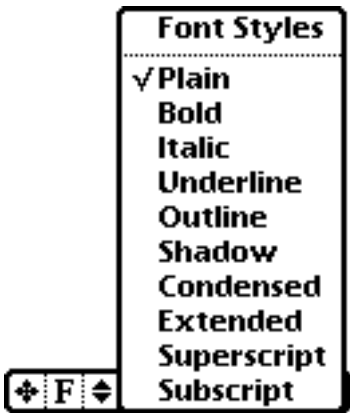
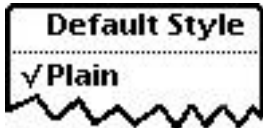
of text, allowing you to shrink or enlarge all the text or any part of it, down to a single word.



Opening the Font Size without first selecting a block of text displays the Default Font Size menu, allowing you to set the font size of all future text entered.



FONT STYLES MENU



The fourth icon displays the Font Styles menus, which adds seven more font styles to the three that come with the Newton. Elegance also gives you the ability to use more than one style at a time on an individual block of text, which is not possible without Elegance.

Aside from the Plain, Bold and Underline styles built into the Newton, Elegance adds Italic, Outline, Shadow, Condensed, Extended, Superscript and Subscript to the options available.

Any existing block of text may have its font style changed, or one or more styles applied simultaneously. This is accomplished by selecting that text block, opening the Font Styles menu and choosing a different style.

Opening the Font Styles icon without first selecting a block of text displays the Default Style Menu, allowing you to set the style of all future text input. The menu headline changes from "Font Styles" to "Default Style".

If you have two or more font styles selected in either Font Styles or Default Style and wish to remove one, simply open the menu and tap the unwanted style again. Tapping Plain removes all styles.

Plain

Bold

Italic

Underline

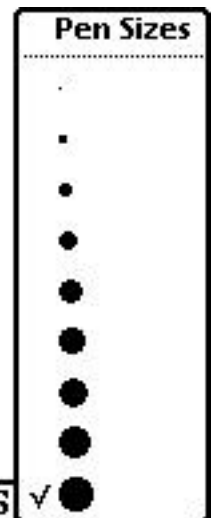
Outline

Shadow

Condensed

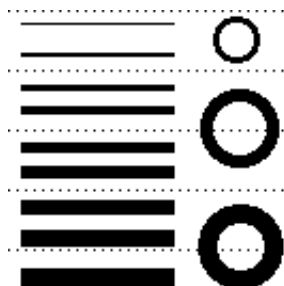
Extended

PEN SIZES MENU



The fifth icon displays the Pen Sizes menu, which allows you to change the width of the line drawn by the pen. Elegance give you five thicker widths to work with, adding to the four widths built into the Newton.

Selecting a pen size will also change your default pen setting.



SLEEP TIME MENU

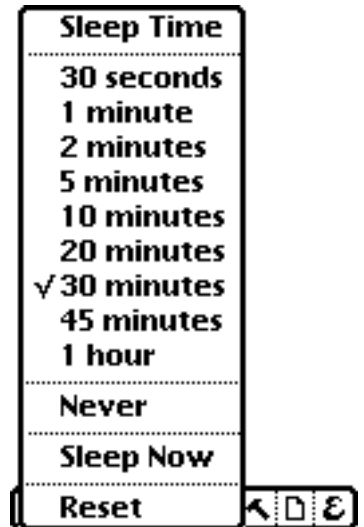


The sixth icon displays the Sleep Time menu, which allows you to adjust the battery-saving screen sleep function with a single tap.

The Sleep Time options range from the very brief, best when batteries are low, to longer options or no sleep at all, suitable if the Newton is plugged in. The options are 30 seconds, 1, 2, 35, 10, 20, 30, 45 minutes, 1 hour or never.

Sleep Now puts the Newton to sleep with a tap of the pen.

The Reset option performs the same function as the reset button found inside the battery compartment, without the inconvenience of getting to it.



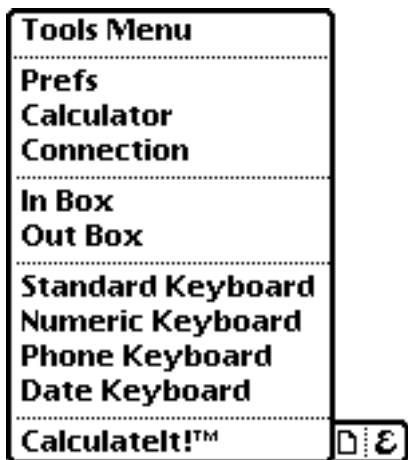
TOOLS MENU



The seventh icon displays the customizable Tools menu. This menu gives you access to a set of basic tools that are not normally available in all Newton Applications.

The Tools Menu's contents remains the same no matter what Newton application is open at the time. It is designed to allow continuous access to the tools you use most often. You can put any package that you have installed in your Extra's drawer, as well as a number of tools that provide access to internal functions inside the Newton.

The Tools Menu is setup with the following default configuration:



Prefs	Opens the Newton's Preferences directory.
Calculator	Opens the Newton's Original Calculator.
Connection	Allows you to select the type of connection to your computer.
In Box	Provides access to any and all items sent to your Newton.
Out Box	Provides access to any and all items to be sent from your Newton.
Keyboards	With Elegance the Standard, Numeric,

Phone and Date Keyboards are now available at all times and in all areas, even those where only one keyboard is originally provided.

Calculatelt!

Elegance's built-in calculator that will solve hand written math.

A complete description of the Tools that are supplied with Elegance can be found in the SoupStocks chapter.

If you have not used the Elegance Customizer since installing Elegance on your Newton, tapping the Tools icon will bring up the message: "No Tools Available. Use the Elegance™ Customizer".



If this message appears, you need to install the initial default setting from the Elegance Customizer. This procedure is detailed the next section entitled: Elegance Customizer.



APPLICATIONS MENU

The eighth icon displays the Applications Menu. This is actually a series of context sensitive menus that change depending on which Newton application you are using at the time.

Each of these menus are fully customizable, providing access to the features you find most useful when working in the extras Drawer, Notes, Names and Dates applications.



The next chapter, Customizing Elegance, details how to personalize each application menu.

If you have not used the Elegance Customizer since installing Elegance on your Newton, the Applications icon will appear as a black diamond. Tapping this Applications icon will display the message: "No Tools Available. Use the Elegance™ Customizer". The same message will appear if now tools are installed for a particular application, or if the application is not recognized by Elegance.

A complete description of the Tools that are supplied with Elegance can be found in the SoupStocks chapter.

If the application you are using has support for Elegance built in, you will see additional items appear for that application. Developers can request a developers kit, which describes how to add support to an application.

ELEGANCE™ MENU



The ninth and final icon displays the Elegance™ Menu, which contains several menu items that control the size and location of the toolbar, and which display product information. It also contains the Customizer controls.



About Elegance

About Elegance displays the product information, including the version number of Elegance.

Set Home Position

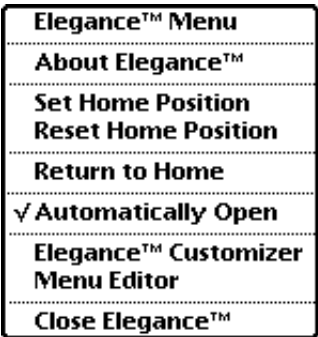
Set Home Position allows you to change the toolbar's home position. This is the position that Elegance will default to when you open it.

Reset Home Position

If you have set a new home position for the toolbar, a new menu item appears in the Elegance Menu. Selecting "Reset Home Position" resets the toolbar to the default home position.

Return to Home

Selecting this item will return the Elegance toolbar to the home position. This home position is either the "factory default" position at the bottom right of your Newton screen or is the position that you have set using "Set Home Position" above.

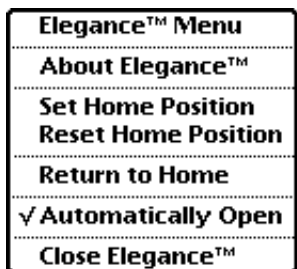


Automatically Open

Automatically Open, when checked, will cause Elegance to open after a reset.

Elegance Customizer

Elegance Customizer accesses the Customizer's options screen, and only appears if the Customizer is installed in your Newton.



Menu Editor

Menu Editor opens directly to the Customizer menu editing screen, and only appears if the Customizer is installed in your Newton.

Close Elegance

Close Elegance will quit the application and free up any memory that Elegance was using. To reopen Elegance go to the Extras Drawer and tap the Elegance icon there.



You can also close Elegance by tapping it's icon in the Extras Drawer, but this only hides Elegance, usually without freeing up any memory.

ELEGANCECUSTOMIZER

This chapter teaches you how to customize your version of Elegance. You can easily add, remove or change the order of tools that are displayed when you open the Tools Menu or Applications Menu on the toolbar.

This feature not only allows you to make your version of Elegance as customizable as possible, it also allows this package to grow as we at the Lightbulb Factory adds new tools. The process is simple.

The Customizer has two parts to it. The first is the basic window, which allows you to set the defaults, remove the Elegance settings and the open the Menu Editor.

BASIC CUSTOMIZER WINDOW

Opening EleganceCustomizer from the toolbar displays the Elegance Customizer screen. This screen has three buttons: Default, Custom, and Remove Elegance Soups.

If you are installing Elegance for the first time, only Default and Custom will appear. You must first install the Default setting, by tapping the Default button.

Default Button

Tapping this button will create the default setting for the Tools and Applications menus. Tapping it after you have customized Elegance will return the toolbar menus to their default settings, clearing any menu changes you have made with the Customizer. You will be asked to confirm this action.



Custom button

This button will open the Elegance Customizer's Menu Editor screen. You can also open the screen directly from the toolbar menu by selecting the Menu Editor item from the Elegance icon's toolbar menu.

Remove Elegance Settings

Tapping this button clears all custom settings. Not only will any menus that you have added to or changed through the Customizer be lost, but the Elegance Customizer's default settings will be cleared, meaning neither the Tools nor the Applications Menus on the Elegance toolbar will have any items.

MENU EDITOR

The Elegance Customizer Menu Editor allows you to fine tune your Elegance Menus. Using the Menu Editor you can control the appearance of several of your Elegance menus.

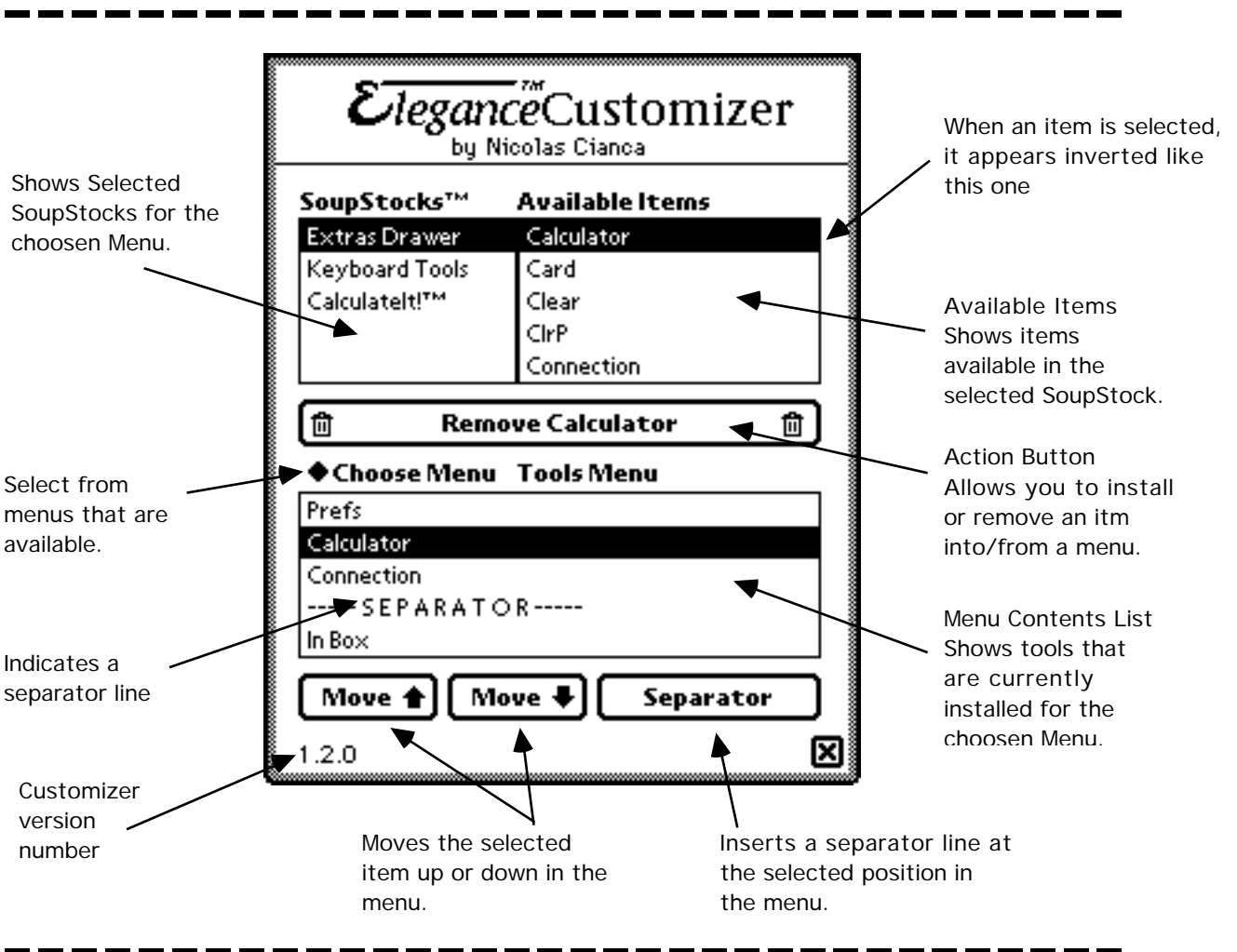
The Elegance Customizer menu editing screen has three list areas:

SoupStocks

The SoupStocks area, in the upper left-hand corner of the screen, lists groups of tools that are available for custom installation in Elegance. Selecting an item in SoupStocks displays a list of tools available for installation.

Available Items

The Available Items area, in the upper right-hand corner of the screen lists every tool available in the selected SoupStocks items



Menu Contents List

Shows the items that are currently installed in a menu. The Choose Menu shows which menu is the active menu.

USING THE MENU EDITOR

In the tools Menu, for example, one of the SoupStocks is the Extras Drawer. Several Items from the Newton's Extras Drawer, such as the standard Calculator, are found in the default Elegance Customizer setting. Using the Customizer, you can put any item from the Extras Drawer into the Elegance Tools Menu.

Selecting an item in Available Items will cause it to be selected in the Menu Contents List as well, if it is already installed. If it is not, the Remove button will change to an install button, and list that tool.

Menu Editor Controls

There are four basic controls for the Menu Editor. They are:

Action Button	Installs or removes any selected item.
Move Up	Moves any selected item up one position in a menu.
Move Down	Moves any selected item down one position in a menu.
Separator	Inserts a separator line in a menu.

CUSTOMIZER LISTS

Navigating the Soup Stocks, Available Items and Menu Contents Lists

To scroll up and down in a list, you press and drag in the direction you want the list to move. For example, pressing and dragging down will scroll the list down. This is true for any of the three lists that appear, the SoupStocks, Available Items and Menu Contents List.

The basic method of using the Menu Editor is simple:



Select a menu from the "Choose Menu", which will allow you to select from a list of items. These items are the menus that appear in Elegance's Tools and Applications menus. With this version of the Installer, the following items will appear:

SoupStocks™	Available Items
Extras Drawer	Calculator
Keyboard Tools	Card
Calculatelt!™	Clear
	ClrP
	Connection

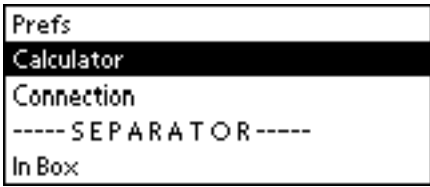
If the menu you select has any SoupStocks available, they will appear in the upper portion of the Customizer window in the SoupStocks list. To scroll up and down in this list, you press and drag in the direction you want the list to move. In the case of the Tools Menu, you will see the following (in the picture to the left) SoupStocks available.

3)

Selecting a SoupStock will show you the tools that are available for that SoupStock. In



4)



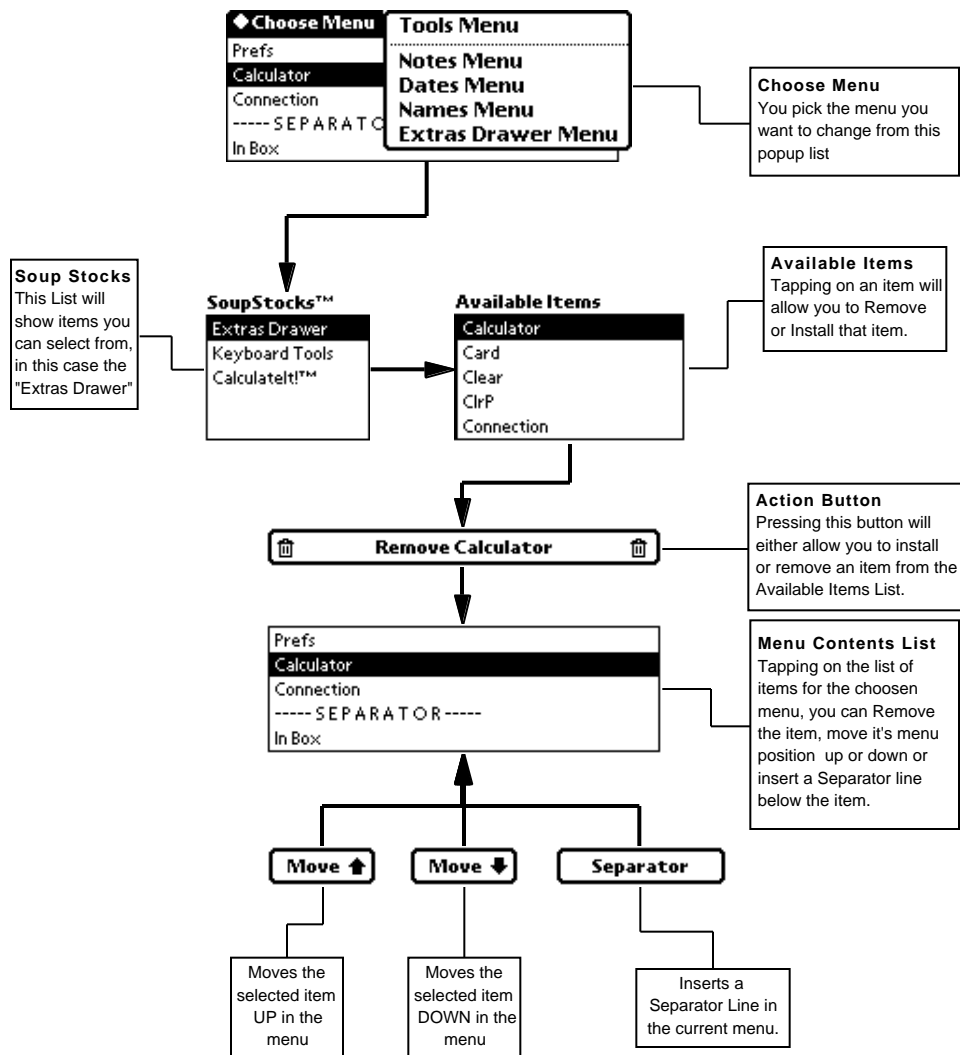
5)

the case of the Extras Drawer, you will see the packages that are installed on your Newton.

Selecting a tool in the Available Items list will allow you to either install or remove that item. The Action button's text will change to indicate if the action is going to "Remove" or "Install" the selected tool. To scroll up and down in this list, you press and drag in the direction you want the list to move.

The Menu Contents List shows the items that are currently installed in the menu that is currently selected. Again, to scroll, simply press and drag either up or down to move in the list.

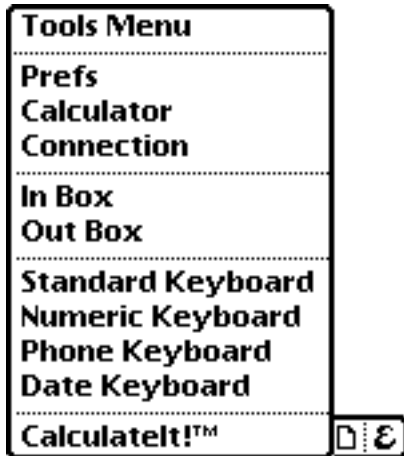
MENU EDITOR FLOW CHART



SOUPSTOCKS

There are two types of SoupStocks, the first is for use with the Tools menu and the second with the Applications menu. In the Customizer these show up with in the following areas:

TOOLS MENU SOUPSTOCKS



Extras Drawer

This tool will let you install any package you have in your Extras into the Tools Menu for quick access.

Keyboard Tools

Provides quick access to any of the built in keyboards. The keyboards can be called up in any text enterable area, including those areas that a keyboard would normally not be available.

Calculatelt!

Gives your Newton the ability to solve simple and complex mathematical formulas simply by typing or writing out an equation followed by an "equals" (=) sign, and tapping the Calculatelt! Menu item.

Literally dozens of higher mathematical functions, such as sine, cosine and logarithms, are accessible through Calculatelt!

A list of Calculatelt! Functions is available in Appendix B.

APPLICATIONS MENUS SOUPSTOCKS

Applications Menus SoupStocks are special add-on's to Elegance that allow Elegance to add functionality to other applications and alter the behaviour. Some of these features will probably become essential to your everyday usage of the Newton. SoupStocks for popular applications can easily be made by the authors of the software or by other third party programmers.

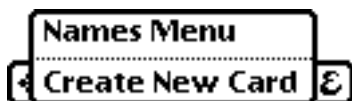
NAMES MENU

These are utilities for the built-in Names application.

Create New Card

Will create a new blank card in the Names application. If you have a memory card installed, there will be two options:

- Create New Card - Internal
- Create New Card - On Card



The 'Internal' option creates the note on your internal memory, while the 'Card' option creates it your external storage card.

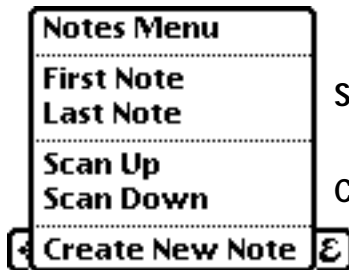
NOTES MENU

The Default Notes Menu contains five tools which help you to better manage your notes.

First Note Tap this to instantly take you to the first note.

Last Note Tap this to instantly take you to the top of the last note.

Scan Up Tap this to begin scrolling up through your notes until it reaches the top of your list or until you tap once on the screen, which stops the scrolling.



Scan Down Identical to Scan Up, except that it scrolls down.

Create New Note Tap this to go to the bottom note and automatically creates a note separator bar. Note that if you have a memory card installed, there will be two options:

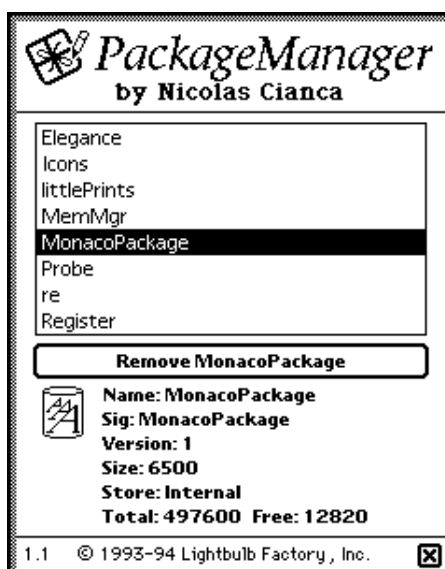
- Create New Note - Internal
- Create New Note - On Card

DATES MENU

There are no tools currently available in the default Dates/Calendar Menu.

EXTRAS MENU

PackageManager™ This mini-application displays a list of all the packages currently installed on your Newton (such as Elegance) including invisible ones.



One tap highlights a package, displaying its file information, including name, version, number of bytes it uses, and where it is stored. To scroll up and down in the list, you press and drag in the direction you want the list to move.

PackageManager also displays how much space is currently in use and how much is free, both in the internal memory and on the external memory card, depending on where a highlighted package is stored.

A package's name will appear in the Remove button. Tapping this button will remove that package. You will be asked to confirm this action.

Tapping the OK button will permanently remove the package from your Newton.

INSTALLING ELEGANCE

To save space in the internal memory of the Newton, Elegance has been designed to be as compact as possible. It has also been divided into two parts that correspond to the software's general purposes: Elegance (the toolbar) and the Elegance Customizer, which is used only while customizing Elegance.

Elegance makes nearly every function of your Newton easier to use and more efficient, so it will very likely be in use whenever your Newton is on. Therefore, we strongly recommend that you install Elegance in your Newton's internal memory rather than running it from a memory storage card. Elegance uses only 60K of memory, and we think you will quickly find the space is well worth it.

If your Newton is short of internal memory space, the Elegance Customizer can be left on a memory storage card, and need only be used when customizing Elegance or installing new tools.

The Elegance Customizer requires 65K, but need only be run when the package is first installed, and at those times when you wish to customize the program. For this reason, we recommend you install Elegance on an external memory storage card to save space in the internal memory.

Of course, if you have 125K free or are planning to experiment with the customizable features, both packages may be installed internally.

Elegance works equally well whether it is run off the internal memory or from an external memory card.

If you have had a previous version of Elegance installed, it's advisable that you run the ClearElegance utility that is included with the distribution. For more information of ClearElegance, see the Clear Elegance documentation.

ENTERING YOUR REGISTRATION NUMBER

When you start Elegance for the first time you will be prompted to enter your registration number or choose Demo mode. The registration number is supplied to you when you register your copy or purchase a physical package. If you purchased the Elegance Package your Registration Number can be found on the Elegance Floppy Disk or on the Registration Card.

When you enter your registration number, Elegance will work normally and you won't be bothered by this dialog again. However, keep your serial number handy in case you need to re-install Elegance.

TECHNICAL SUPPORT

QUESTIONS & SUPPORT

If you have any questions, problems or suggestions for Elegance, there are several ways you can contact us:

Send us electronic mail to: support@lightbulb.com

Visit our web server. The URL is: <http://www.lightbulb.com>

Call us at: 212.925.4755

Fax us at: 212.966.4130

Or send us U.S. Mail to:

Lightbulb Factory, Inc.
69 Wooster Street
New York, NY 10012

OBTAINING NEW RELEASES

We are continually working on Elegance and new versions appear on a regular basis. Elegance can be obtained a number of ways. The various methods are described below:

FTP

Our FTP server always contains the latest versions of Elegance and various support documents and other files. Our FTP server is located at:

<ftp://ftp.lightbulb.com/pub/elegance>

The software is also available in the standard internet archives:

<ftp://sumex-aim.stanford.edu/info-mac/nwt/util>
or any info-mac mirror.

E-MAIL

You can receive Elegance via e-mail by sending e-mail to:

Elegance	GetElegance@lightbulb.com
Elegance	GetElegancePC@lightbulb.com

The latest version will be e-mailed back to the e-mail account that was used to send the message.

ON-LINE SERVICES

Elegance is also available from all the major on-line services, such as AOL, CompuServe and eWorld.

POSTAL MAIL

Elegance can also be obtained by regular mail if you don't have access to the internet or one of the on-line services for a \$10 fee to cover shipping and handling. If you are outside the United States the cost is \$15 in US funds. You must be a registered user in our database to request an upgrade by regular mail.

REPORTING PROBLEMS

If you are reporting a problem, please include a description of the problem you are having, along with information about the Newton make and model, amount of memory you have and other packages you have installed. If you are using our World Wide Web Server, you can fill out a form to report your problem, ask your questions, or access our Frequently Asked Questions (FAQ) database.

COMPATIBILITY

Elegance has been extensively tested and has been in use on many Newton's since late 1993. Elegance is compatible with the all existing Newton devices, including the Apple MessagePad, MessagePad 100, MessagePad 110 and MessagePad 120, the Sharp ExpertPad and the Motorola Marco.

APPENDIX A CALCULATEIT! FUNCTIONS

Math Functions - These math functions operate on or return integers.

Max(a, b)	Returns the maximum value of the two integers a and b.
Min(a, b)	Returns the minimum value of the two integers a and b.
Ceiling(x)	Returns the smallest integer not less than the specified real number. (Rounds up the real number to an integer.)
Floor(x)	Returns the largest integer not greater than the specified real number. (Rounds down the real number to an integer.)
Real(x)	Converts the specified integer to a real number.
Random (low, high)	Returns a random integer in the range between the two integers low and high. The range is inclusive of the numbers low and high.
SetRandomSeed (seedNumber)	Seeds the random number generator with the number. When seeded with the same number, the random number generator (Random function) will return the same sequence of random numbers each time you reseed it. To generate virtually random numbers, you can seed it with the value returned from the time function Ticks, example: SetRandomSeed(Ticks());

Floating Point Math Functions

17Abs(x)	Log(x)
Acos(x)	Log10(x)
Asin(x)	Pow(x,y)
Atan(x)	Sign(x)
Atan2(x,y)	Sin(x)
Cos(x)	Sinh(x)
Cosh(x)	Sqrt(x)
Exp(x)	Tan(x)
Fabs(x)	Tanh(x)
Fmod(x,y)	

NewtonScript provides the following floating point SANE (Standard Apple Numerics Environment) functions. SANE meets all requirements for extended-precision, floating-point arithmetic as prescribed by IEEE Standard 754 and ensures that all floating-point operations are performed consistently and return the most accurate results possible.

Please refer to the Apple Numerics Manual for details on these functions.

Note: that the NewtonScript floating point package does not strictly adhere to the SANE standards.

17Acosh(x)	LdExp(x,y)
Asinh(x)	LGamma(x)
Atanh(x)	Logb(x)
CopySign(x,y)	Log1p(x)
Erf(x)	NearbyInt(x)
Erfc(x)	NextAfterD(x,y)
Expm1(x)	RandomX(x,y)
FDim(x,y)	Remainder(x,y)
FMax(x,y)	RemQuo(x,y)
FMin(x,y)	Rint(x)
Gamma(x)	RintToL(x)
Hypot(x,y)	Round(x)
IsFinite(x)	Scalb(x,y)
IsNan(x)	SignBit(x)
IsNormal(x)	Trunc(x)

These functions manage the floating point environment:

17FeClearExcept(x)	FeSetEnv(x)
FeGetEnv()	FeSetExcept(x,y)
FeGetExcept(x)	FeSetRound(x)
FeGetRound()	FeTestExcept(x)
FeHoldExcept(x)	FeUpdateEnv(x)
FeRaiseExcept(x)	

Financial Functions

Annuity(rate, periods)	Calculates the present value factor of an annuity at a given interest rate over the specified number of periods.
Compound(rate, periods)	Calculates compounded interest factor over the specified number of periods.

LEGAL STUFF

Elegance™ and EleganceLite™ are Copyright © 1993-1995 Lightbulb Factory, Inc. All Rights Reserved. Elegance™, EleganceLite™ and its Logos are Registered Trademarks of Lightbulb Factory, Inc.

This software is NOT in the public domain. You may freely copy and distribute this software, provided that you do not distribute serial numbers or charge for it. This software may be included in any disk or CD-ROM library for public domain and shareware software sold by a nonprofit organization. This software may not be included in any commercial software collection sold for profit, nor may it be bundled with any commercial software, hardware, books or other media without a software license from Lightbulb Factory, Inc.

Permission is granted for the distribution of this software via commercial on-line providers (such as CompuServe, America On-line, eWorld, AppleLink, etc.), internet service providers and BBS systems that charge a nominal fee for connection time or membership, and do not charge for the software itself.

However it is distributed, the Elegance package must include all the original, unmodified, files of the Elegance distribution, including the software and this documentation. The most recent version is always available from our ftp server in the Elegance directory (<ftp://ftp.lightbulb.com/pub/elegance>).

DISCLAIMER OF WARRANTY:

In using this software, you understand and agree that this software is provided "as is" without warranty of any kind. The entire risk as to the results and performance of using this software lies entirely with you, the user. The author (Lightbulb Factory, Inc.) does not make any warranties, either expressed or implied, including but not limited to implied warranties of merchantability and fitness for a particular purpose, with respect to this software.

In no event shall the author be liable for any consequential, incidental, or special damages whatsoever (including without limitation damages for loss of critical data, loss of profits, interruption of business, and the like) arising out of the use or inability to use this software.

Although the author would appreciate any feedback and bug reports, the author shall not be responsible for correcting any problems which you discover or otherwise help you maintain and use this software. Furthermore, the author may at any time replace, modify, alter, improve, enhance or change this software.